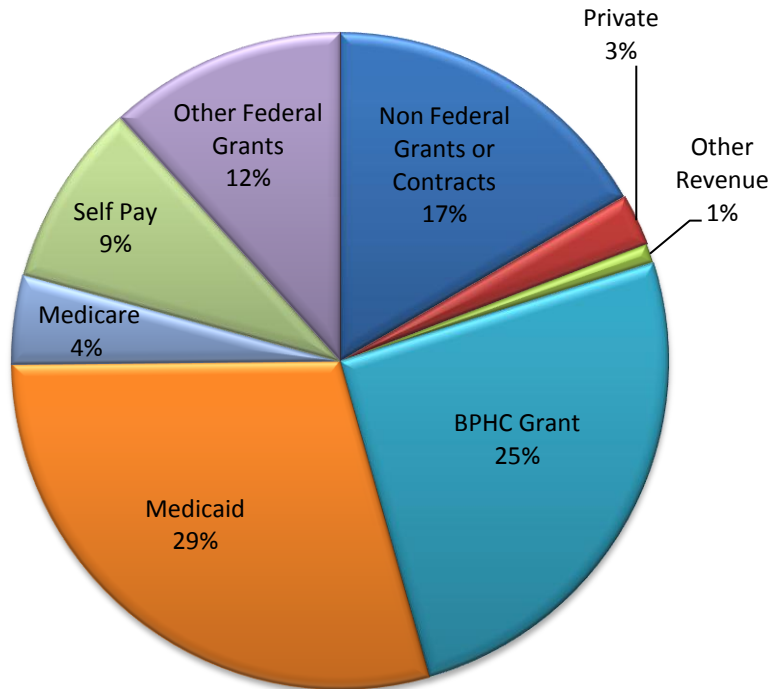


# Louisiana's Health Centers Statistics

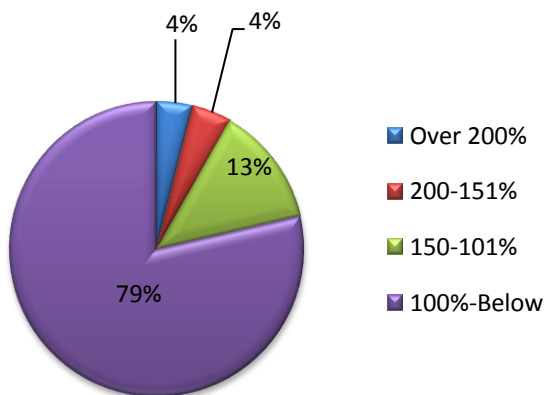
## 2010 FQHC Revenue Distribution Total Revenue: \$122,404,206



## 2010 Louisiana FQHC Quick Facts

Total Users (unduplicated)	206,960
Total Uninsured	92,193
Total Encounters	647,928
Mental Health Service Users	19,314
Medical Health Service Users	166,021
Dental Health Service Users	52,305
Total FTEs	1290
Medical Service Providers (Physicians, Mid-Levels and Others)	420
Dental Service Providers	121
Mental Health Service Providers	51

## 2010 Patient Income Distribution



The figures in this chart represent the percentage of known patient information.

## 2010 FQHC User Payor Mix

