

COMMUNITY HEALTHCORPS QUARTERLY CHRONICLE

Louisiana Primary Care Association



Vol. V, Issue III

Save the Date!



June

Nat'l Cancer Survivors Day 6
Nat'l Men's Health Week 14-20
National HIV Testing Day 27
Fireworks Safety Month
Home Safety Month

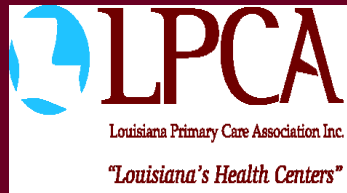
July

Cord Blood Awareness Month
Juvenile Arthritis Awareness Month
International Group B Strep
Awareness Month
UV Safety Month

August

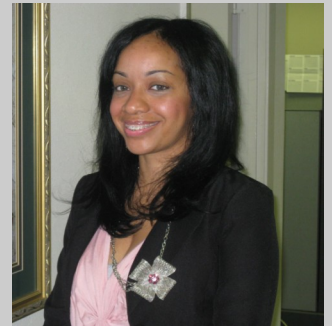
Nat'l Minority Donor Awareness Day 1
Nat'l Health Center Week 8-14*
Nat'l Immunization Awareness Month
Children's Eye Health & Safety Month

**Mandatory HealthCorps Activities*



WELCOME ABOARD!

LPCA is pleased to welcome Michelle M. Wales, MPA, to the Association's staff as the Community HealthCorps Program Coordinator. She began this position on Monday, May 17, 2010. Ms. Wales will manage all programmatic operations for the Community HealthCorps program. Ms. Wales received a Master's of Public Administration from Southern University's Nelson Mandela School of Public Policy and Urban Affairs graduate program. Before joining LPCA, she served as a Policy Analyst with A. Charles Consultants in Baton Rouge, LA where she conducted and analyzed local, state and federal legislation for impact on existing policies, programs and initiatives.



Michelle M. Wales, MPA

Ms. Wales has experience managing multiple projects while managing multiple clients including policy and advocacy organizations. Additionally, she has formerly directed and managed daily operations for a non-profit organization dedicated to providing financial literacy education for priority populations. We are very pleased to have Ms. Wales join our staff and look forward to her strengthening the LPCA Community HealthCorps Program. If you or any of LPCA's partners would like to contact her, she can be reached via email (mwales@lpcanet.net) or phone (225.927.7662 ext. 212).

~Angela Sheffie, MPA, Deputy Director, LPCA

Contact Us:

Rhonda R. Litt, Executive Director
rhonda@lpcanet.net

Michelle M. Wales, MPA
Community HealthCorps Program
Coordinator
mwales@lpcanet.net

4550 North Blvd. Suite 120
Baton Rouge, LA 70806
Ph: 225-927-7662 Fax: 225-927-7688
www.lpcanet.net

LPCA'S 2010 ANNUAL COFERENCE

On June 27th-30th, LPCA held it's Annual Continuing Education Conference in Shreveport, Louisiana. Community HealthCorps Members Lindsey Binger, Jason Jacob and Cheenwah Honora all served as Volunteers in which they assisted in operating the registration tables and moderated speaker sessions. As Moderators, they were responsible for keeping the flow of the sessions on schedule. On behalf of LPCA's staff, we would like to thank them for making this year's conference a success!

~Michelle M. Wales, MPA, Community
HealthCorps Program Coordinator, LPCA



Left-Right: Top: Donald Hunter, Calvin Young, Lindsey Binger*, Tonya Hollins, Michelle M. Wales, Jason Jacob*

Bottom: Ghislaine Yop, Angela Sheffie, Rhonda Litt, Gwen Laury, Cheenwah Honora*

*Community HealthCorps Members

Up in Smoke

A new study, conducted by the Louisiana State University Health Sciences Center and the Coalition for a Tobacco-Free Louisiana (CTFLA), confirmed that bar and casino employees, patrons, and performers are exposed to extremely high levels of secondhand smoke (SHS). The study assessed the impact of environmental tobacco smoke on indoor air quality by measuring indoor air pollution in 27 Baton Rouge bars and 1 casino.

SHS is comprised of a large number of very small particles, or "particulate matter." Concentrations of these harmful particulates are measured in numbers from 0 to 250 and higher.

According to the Environmental Protection Agency (EPA) Air Quality Index, measurements between 0 and 15 are rated as "Good," ratings from 150 to 250 are "Very Unhealthy" and ratings of 250 and up are considered "Hazardous." In the Baton Rouge analysis, the average concentration level in the bars examined was 237, or almost 14 times higher than the air quality of nonsmoking venues in Louisiana.

The health effects associated with this level of exposure include: significant aggravation of heart or lung disease, premature mortality in people with cardiopulmonary disease and older adults, and a significant increase in negative respiratory effects within the general population.



The study's findings show people that frequent Baton Rouge bars and casinos, through work and play, involuntarily inhale enough SHS to suffer some of the same health effects of pack-a-day smokers.

For more on this study and the growing movement to protect all Louisiana employees from secondhand smoke, visit www.letsbetotallyclear.org.

~ Lindsey Binger, Community HealthCorps Tobacco Advocate Specialist



A HEALTHIER BRCC....

CRASH
campus resistance Against Smoking Habits

The Louisiana Tobacco Control Program's (LTCP) Regional Community Capacity Building (RCCB) project was designed to help identify and eliminate health disparities among 18-24 year old young adults using the Community Action Model (CAM). The C.R.A.S.H. Club was created to implement this project on Baton Rouge Community College's (BRCC) campus to help reduce tobacco use and exposure on its campus by strengthening its tobacco policies. In the past months, C.R.A.S.H. has been researching the smoking habits of BRCC's students while promoting awareness of tobacco-related health issues and educating individuals on campus of ways to make healthier lifestyle choices. During the Spring 2010 semester at BRCC, the C.R.A.S.H. Club operated an informational table Monday-Friday in the Student Center. Various forms of health information, brochures, and cessation resources was provided to individuals C.R.A.S.H. members encountered. During this time, the C.R.A.S.H. Club also gathered opinions and concerns about the tobacco use and second-hand smoke exposure on BRCC's campus through recorded interviews with students, faculty, and staff. The C.R.A.S.H. Club intends to use these recordings to develop a short informational documentary to presents to campus officials and other interested parties.

On May 6, 2010 the C.R.A.S.H. Club held a meeting with, Angela Jackson, the Executive Assistant to BRCC's Chancellor- Myrtle Dorsey. During the meeting, an outline was presented expressing C.R.A.S.H.'s concerns for the overall health of the BRCC community. Ms. Jackson confirmed her intentions to provide the information presented to Chancellor Dorsey. C.R.A.S.H. hopes this will result in a meeting with the Chancellor in the near future to present our policy proposal to help make BRCC a healthier campus!

~Jason Jacob, C.R.A.S.H. Club Vice-President, BRCC Community HealthCorps-RCCB Advocate

VOLUNTEER JOB OPENINGS!

LPCA currently has Regional Community Capacity Building (RCCB) Project Advocate volunteer positions available. RCCB Advocates provides volunteer services based on a policy oriented action plan to combat tobacco use among members of the young adult population who are identified as straight to work.

Young adults are defined as straight to work if they have not completed a high school education, completed a General Education Develop (GED) program, attend a 2 year community or technical college program developing skills to immediately enter the workforce, and are not enrolled in a 4 year college institution.

To find our more about becoming a RCCB Advocate, contact Michelle M. Wales, MPA at mwales@lpcanet.net or 225.927.7662 x212.



New Beginnings: St. Cecilia Health Clinic

On Friday, April 30, 2010, Daughters of Charity Services of New Orleans (DOC) held an opening for its newest building, St. Helena Health Clinic. DOC has always been a pillar in the community and after the storm did not hesitate to come back and continue to provide quality health care at a low cost to those in the community.

The opening ceremony was a celebratory moment not just for the staff and two new doctors but moreover for those who will be able to receive higher quality of care due to the opening of the new clinic. For the past years, St. Cecilia had been housed in the back of an old church.

The new building was once an elementary school that was devastated in Hurricane Katrina. ; however, with hard work and dedication, it was transformed into a beautiful, thriving health center.

The ribbon was cut by a local elderly woman who frequented

St. Cecilia Clinic. She considered it to be, along with God, the reason why she enjoyed such a high quality of life. More clinics like Daughters of Charity are needed. It makes me feel awesome to be a part of a team with such a heart for the community.

~ Tyler Litt, DCSNO Community Outreach Services HealthCorps Member

EXCELth Inc. Behavioral Health Center: At-a-Glance



In accordance with its Employee Wellness Program, EXCELth has had various speakers come in and share a great deal of helpful and insightful information concerning various health topics during the month of May 2010. The Baton Rouge location has been progressive with the launch of its program and the employees foresee it growing further to more efficiently address their individual needs based on their personal goal plans.

EXCELth, Baton Rouge, is also in the process of

becoming a fully qualified Medicaid application center. In May, Yolanda Johnson, LCSW, attended the *Manager's Orientation* in order to help the center become a step closer to achieving this certification.

As an update, the substance and mental abuse directories have been compiled and the resource binders require a few minor adjustments.

The resource binders will be presented in August during EXCELth's National Health Center Activities the week of August 8th-14th.

EXCELth would like to thank LPCA for assisting with raising awareness of the Baton Rouge center through its invitation to participate in the Legislative Health Fair. This event enabled the center to develop indefinite partnerships that are sure to help EXCELth serve its community more efficiently in the future!

– Cheenwah Honora, Community HealthCorps Member, EXCELth, Inc.

ANNOUNCEMENTS!!

2010-13 HealthCorps Positions Available

The Community HealthCorps Program is currently seeking applicants interested in full-time (1700—service hours) positions for 2010-2011. Eligible applicants must be 18, or 17 with parent's permission, hold a high school diploma or GED, and have proof of U.S. citizenship. Community HealthCorps Members reach out to individuals with no primary care provider and link them with culturally appropriate health care services. As with all AmeriCorps program, The Community HealthCorps also hosts projects and activities for several National Service Days throughout the program year. HealthCorps Members receive a living stipend, health insurance and child care benefits (if eligible), and an educational award upon successful completion of the program.

To apply for the position, contact Michelle M. Wales, MPA, 225-927-7662 Ext.212 email mwales@lpcanet.net.

Register NOW!!!

CPR/First Aid Training

The LPCA Capacity Building Institute staff is certified by the American Heart Association to provide BLS CPR for health-care Providers and their staff. If you are in need of CPR training from , please contact Gwen Laury at 225-927-7662 x 204.

MEMBER REMINDERS!!!



- Submit your semi-monthly timesheets, summary reports and monthly news articles on the appropriate dates.
- All independent coursework and/or training/service hours must be submitted to your Site Supervisor and Program Coordinators for approval prior to participating in the activity. Approval of these hours are contingent on the amount of hours allotted to you based on your member contract and the amount of hours you have already accumulated.
- Your service duties are to be completed in accordance with your Work Plan. As HealthCorps Members, **you cannot duplicate activities that are already as signed to employees at your site.** If any of your assigned tasks seem questionable to you, please contact your Program Coordinator for further clarification and/or approval of the activity.



The Community HealthCorps is a national AmeriCorps program that promotes health care for America's underserved, while developing tomorrow's health care workforce. HealthCorps members reach out to individuals with no regular primary care provider to increase access to health care, provide health education and support that lead to appropriate use of health care services and better "self-care" by health center patients, and recruit and develop volunteers to support community health centers.

For more information on the National Association for Community Health Centers Community HealthCorps Program, please visit:

<http://www.communityhealthcorps.org>

Louisiana Primary Care Association, Inc.