



Louisiana Primary Care Association Inc.

“Louisiana’s Health Centers”

2004 Annual Report



***“Promoting 100% Access and
0 Disparities”***

Louisiana Primary Care Association 2004 Annual Report

A Message from LPCA President:

The year 2004 is well into swing with many moving challenges and projects ahead.

It is our desire to continue to bring the health care movement to another level here in the great state of Louisiana. Our association is excited about the recent health care summit where our newly elected Governor Kathleen Blanco expressed great support of the Federal Qualified Community Health Center (FQHC) model.

With this, as we prepare for our legislative session it is important that we educate, promote, and seek support to improve and enhance the initiative of community health centers across our state. We have already begun to reach the 845,000 uninsured citizens through the development of two new FQHC's access points in Louisiana, one which is a community health care center in Northern Baton Rouge, and the other a health care clinic for the homeless in downtown Baton Rouge.



Additionally, the association is proud to announce funds received through Enterprise Corporation for the Delta for capital outlay technical support for existing sites in the Delta parishes proposing site and service expansion. These sites include Outpatient Medical Center in Natchitoches, Medical Center in Sicily Island, and Primary Health Services in Monroe.

As exemplified, the association is mission driven and stands ready to collaborate and build secure partnerships with other organizing agencies in an effort to meet the current health demands of our state and to foster healthy relationships.

Sincerely,

Dodie LaMott

Dodie LaMott, MHSA
LPCA Board President

Louisiana Primary Care Association 2004 Annual Report

From the Desk of the Director

Rhonda R. Litt

2004 has proven to be a challenging yet rewarding experience for the state, the Association and the entire healthcare system. Just a glimpse of what this year has been thus far. We began the year with an extraordinary annual conference that proved to be a great fundraiser and a memorable educational experience. Seven of our prominent legislators and healthcare champions throughout the state were present at a luncheon in their honor. We received additional funds for capital outlay support to assist existing FQHCs in the Delta parishes who are proposing site and/or service expansion. The Delta parishes are the poorest parishes in the state and some rank amongst the poorest in the nation.

We had an opportunity to participate in New Orleans at the **first-ever** statewide health summit initiated by our **first female** Governor, Kathleen Babineaux Blanco. There were over 2000 concerned citizens, state legislators, and healthcare providers' onsite to discuss the development of a long term plan addressing the constantly escalating uninsured rate in our state. The objective of the summit was to *1) establish a policy recognizing that all citizens of Louisiana have a right to quality basic healthcare, 2) develop a comprehensive Medicaid plan for the short and long-term transition of the state healthcare system and 3) create a new healthcare policy, modeled after the Louisiana Education Accountability Program. This would support an outcome based Medicaid system to promote accountability.*



With a relatively short turn-around time, we moved right into the state legislative session to advocate and encourage members of the Senate and House of Representatives that investing state dollars into FQHCs was a great way to address some of the uninsured. Through our advocacy efforts, it was our desire to help them understand and be prepared to support three pieces of legislation developing new sites and to strengthen and sustain existing sites.

In spite of budget constraints and constant environmental challenges, we have been able to acquire prospects of additional funding from our state general fund. The current Administration has been advocating the uniqueness of FQHCs and the effectiveness of their services. Governor Blanco gave authority to the Department of Health and Hospitals (DHH) to create a long-term plan to increase FQHCs and Rural Health Clinics in Louisiana by enacting Senate Bill 690. DHH along with Louisiana Primary Care Association, Louisiana Public Health Institute, Louisiana Rural Health Association and Louisiana Rural Hospital Association are charged to report its results by September 2004. This is one of those times that you thank the great maker for the genius that developed the statewide strategic planning tool. Maybe half the battle is over!

Nevertheless, I know that the best is yet to come!

Louisiana Primary Care Association 2004 Annual Report

Louisiana Primary Care Association Pioneering in 2004

The year 2004 has been an earmark year for the state of Louisiana, specifically in Government and in Healthcare. During the 2003 Legislative Session, LPCA successfully advocated the passage of the Community-based Primary Health Care Initiative Fund in the state treasury also known as Act No. 1114. The fund provides for monies to be placed in the fund to provide for grants for community health centers and various community health programs. However, the year 2004 marks record high accomplishments and groundbreaking achievements beginning with the election of the first woman Governor for the state of Louisiana, Kathleen Babineaux Blanco. Moreover, she was instrumental in appointing the first female Speaker Pro Tem, Sharon Weston Broome, and Senate Pro Tem, Diana Bajoie. These two women both hold the number two spot within their legislative bodies.

This has been an earmark year for Health Care in Louisiana. Governor Kathleen Blanco subsequent to her election, called for the first ever, statewide health care summit. The purpose of the summit was to gather the state's most prominent health officials, clinicians, administrators and policymakers to discuss ways to rebuild and to strengthen Louisiana's dauntingly unstable health care infrastructure, characterized by having the second worst health indicators in the nation.

As a result of the summit and Dr. Shekar's presentation, Governor Blanco and Senate President, Donald E Hines drafted Senate Bill 690. Senate Bill 690 is the first ever FQHC pertinent legislation in Louisiana that fosters the collaboration of state government and FQHCs. Senate Bill 690 authorizes the Department of Health and Hospitals to develop and implement a long-term plan to encourage expansion and development of FQHCs and rural health clinics. Senate Bill 690 was signed into law Wednesday, June 9th, 2004.



Other pieces of earmark legislation followed the proposal of Senate Bill 690, such as House Bills 1315 and 1385. House Bill 1315, proposed by State Representative Michael Jackson, provided for the uses of the monies within the state treasury Community-based Primary Health Care Initiative Fund for grants to fund community health centers. House Bill 1385, proposed by State Representatives Yvonne J. Dorsey and Willie Hunter, Jr. provided for the creation of the Louisiana Qualified Health Center Grant Program. The purpose of the program was to make service grants to Louisiana qualified health centers. Both House Bill 1315 and House Bill 1385 were sent to the House Appropriations Committee. The implementation of House Bills 1315 and 1385 were contingent upon the appropriation of funds for such purposes. Both House Bills 1315 and 1385 were not funded.

During the latter part of the 2004 Legislative Session two House Bill 1 amendments were proposed that would be beneficial to Louisiana FQHCs providing their passage. House Bill 1 is the appropriations bill for state. The first amendment proposed an \$864,000 increase in payments to the Medicaid Private Provider Program (MPPP) for FQHCs. The federal government has a program where in they match the monies given by the state in a 3 to 1 ratio. The federal government will provide \$2,135,700 to match the state's

Louisiana Primary Care Association 2004 Annual Report

Louisiana Primary Care Association Pioneering in 2004 con't

appropriation. Therefore, the total increase in payments for Louisiana FQHCs in the MPPP is \$3,000,000. State Senator Lydia P. Jackson proposed the second amendment to House Bill 1. She proposed a \$450,000 appropriation to provide for technical and financial assistance for existing FQHCs. Louisiana legislators approved the amendment that proposed a total amount of \$3,000,000 to be added to Medicaid Private Provider Program for existing FQHCs. However, the \$450,000 appropriation for existing FQHCs died in the Senate Conference Committee.

As a result of the efforts of LPCA staff and board members, and their local Senators and Representatives, some of “Louisiana’s Health Centers” received individual appropriations from the state. Some of which include:

<input type="checkbox"/> Capitol City Family Health Center	\$200,000
<input type="checkbox"/> Primary Health Services Center	\$100,000
<input type="checkbox"/> David Raines Community Health Center	\$275,000
<input type="checkbox"/> St. Vincent DePaul Pharmacy	\$30,000
<input type="checkbox"/> Excelth Inc.	\$50,000
<input type="checkbox"/> Alexandria Primary Care Center	\$100,000

LPCA and collaborative partners are excited about the year 2004 because Louisiana’s federally qualified health centers are becoming an intricate part of the state’s health care deliver system. Senator William J. McPherson and Representative Sydnie M. Durand proposed Senate resolution #84. Senate resolution #84 urges and request that the Department of Health and Hospitals study the issue of the health care delivery system in Louisiana and establish a more integrated delivery system. The newly established delivery system will be inclusive of Louisiana’s federally qualified health centers. Representative Sharon W. Broome proposed House Concurrent Resolution 331. House Concurrent Resolution 331 urges and requests that the state’s universities and federally qualified health centers create a local coordination of health care service delivery to meet the needs of the uninsured. Both resolutions were passed by both the Senate and House. LPCA and collaborative partners are earnestly seeking the eradication of all primary health disparities in the state of Louisiana and with the collective support of the state and federally government, this dream is a looming reality.

Other Legislative News

- In accordance to Senate Bill 484 LPCA will be serving the Interagency Task Force on the Future of Family Medicine.
- In accordance to Senate Bill 821 LPCA will be serving on the Louisiana Diabetes Initiatives Council
- In accordance to Act 36, LPCA will serve on a task force to develop a long term plan for expansion of FQHCs and RHCs
- Other Task Force and Commissions: Governor’s Healthcare Reform Panel, Women’s Health Commission, HIV/AIDS Commission , Louisiana Health Care Commission



Louisiana Primary Care Association 2004 Annual Report

Louisiana Primary Care Association Accomplishments and Highlights

- ◆ LPCA moved in its new location, 4550 North Blvd Suite 120.
- ◆ LPCA successfully advocated the passage of Senate Bill 690. SB 690 authorizes Louisiana Department of Health and Hospitals to create a long-term plan to expand and create additional federally qualified health centers and rural health clinics.
- ◆ David Raines Community Health Center and St. Helena Community Health Center were cited as “national models” by Dr. Sam Shekar, U.S. Assistant Surgeon General and Associate Administrator of the Bureau of Primary Health Care.
- ◆ LPCA successfully advocated the passage of the Community-based Primary Health Care Initiative Fund also know as Act No. 1114. (2003 Legislative Regular Session)
- ◆ LPCA has successfully advocated the passage of Senate Resolution #84. Senate Resolution #84 requests that the Louisiana Department of Health and Hospitals study the issue of the health delivery system in Louisiana and the establishment of a more integrated delivery system.
- ◆ LPCA has successfully advocated the passage of an amendment to House Bill 1. The House Bill 1 amendment has added a total of \$3,000,000 to Medicaid Private Provider Program for Louisiana FQHCs.
- ◆ LPCA contracted with Enterprise Corporation to provide space planning analysis, market assessments and other technical assistance, as appropriate to facilitate the expansion, construction, or renovation of Primary Health Services Center, Monroe LA and Sicily Island Community Health Center Sicily Island, LA.
- ◆ LPCA has received 99,670 in supplemental funding from Health Resources Services Administration. LPCA plans to hire a Workforce Development Coordinator and a Quality Improvement Coordinator.
- ◆ LPCA assisted with the establishment of the Louisiana University of Medical Sciences, College of Primary Care Medicine. The school was set to start in September, 2004.
- ◆ LPCA is advocating the establishment of adult health literacy programs through its partnership with the Health Literacy Task Force.
- ◆ Policies and Issues Forum Highlights and Accomplishments
- ◆ LPCA revamped and updated its website

Louisiana Primary Care Association 2004 Annual Report

2004 Board Directors

Emma Tanner, Executive Director
Capitol City Family Health Center

Rose Turner, Executive Director
Outpatient Medical Center

- *Natchitoches at Natchitoches Parish*
- *Leesville in Vernon Parish*
- *Tallulah in Madison Parish*

Willie White, Executive Director
David Raines Community Health Center

- *Shreveport at Caddo Parish*
- *Gillian at Caddo Parish*
- *Haynesville at Claiborne Parish*
- *Minden at Webster Parish*

Catherine Tonore, Executive Director
Primary Health Services Center

- *Monroe at Ouachita Parish*
- *Monroe at Ouachita Parish (Look a Like)*
- *SD Hill*

Dr. Robert Dawson, Executive Director
East Jefferson Community Health Center

Victor Kirk, Chief Executive Officer
Rapides Primary Health Care Center

Sara Simms, Executive Director
Eastside Community Health Center

Mark Keiser, Executive Director
St. Charles Community Health Center

Michael Andry, Executive Director
Excelth Inc.

- *Family Health Clinic*
- *Daughters of Charity Health Services*
- *Algiers Fischer Clinic*

Linda Beauvais, Executive Director
St. Helena Community Health Center

Vacant , Executive Director
St Bernard Health Center

Dodie LaMott, Executive Director
Southwest Louisiana Primary Health Care, Inc.

Willie Mae Martin, Executive Director
Health Care for the Homeless

Eric Taylor, Executive Director
Southwest Louisiana Center for Health Services

Roderick Campbell, Executive Director
Iberia Comprehensive Community Health Center

- *Abbeville Community Health Center*

Dr. Gary Wiltz, Executive Director
Teche Action Clinic

- *Edgard Health Center*

Linda Matessino, Executive Director
Innis Medical Center

Emma Tarver, Executive Director
The Medical Center

- *Wisner Medical Clinic*

Frank Wesley, Executive Director
Baton Rouge Primary Care Collaborative

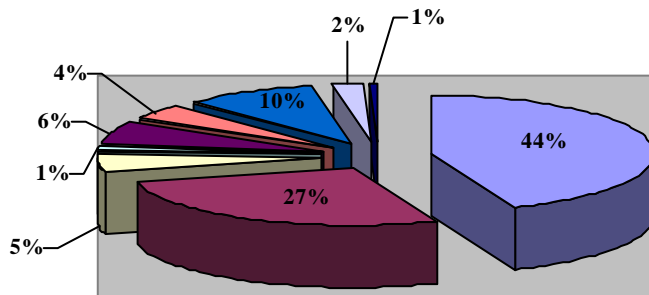
- *North Baton Rouge Community Health Center*
- *Health Care for the Homeless in Baton Rouge*

Louisiana Primary Care Association 2004 Annual Report

Louisiana's Health Centers Statistics, Charts and Graphs

Louisiana's Health Centers Revenue Distribution according to the 2003 UDS Report

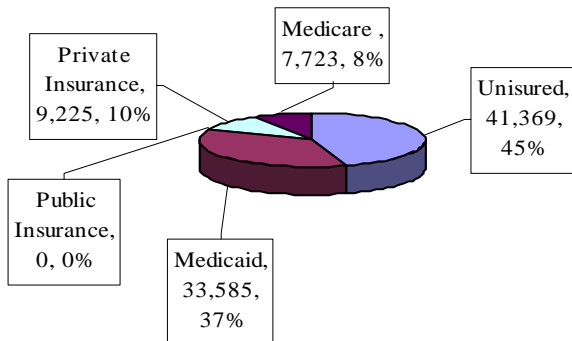
Revenue Total: \$35,170,570



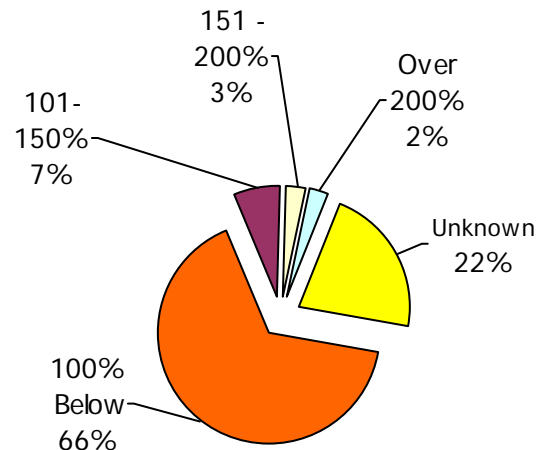
Louisiana's Health Centers Facts According to 2003 UDS Report

Total Users	90,585
Non-White Users	72% or 62,982
Total Encounters	300,356
Total Fulltime Equivalents	487
Mental Health Service Users	4% or 3617
Medical Health Service Users	84% or 75,658
Dental Health Service Users	17% or 15,489
Substance Abuse Service Users	0.7% or 613

User Insurance Source for Louisiana's Health Centers 2003



Distribution of Louisiana's Health Centers Users by Income According to Federal Poverty Guidelines 2003



Louisiana Primary Care Association 2004 Annual Report

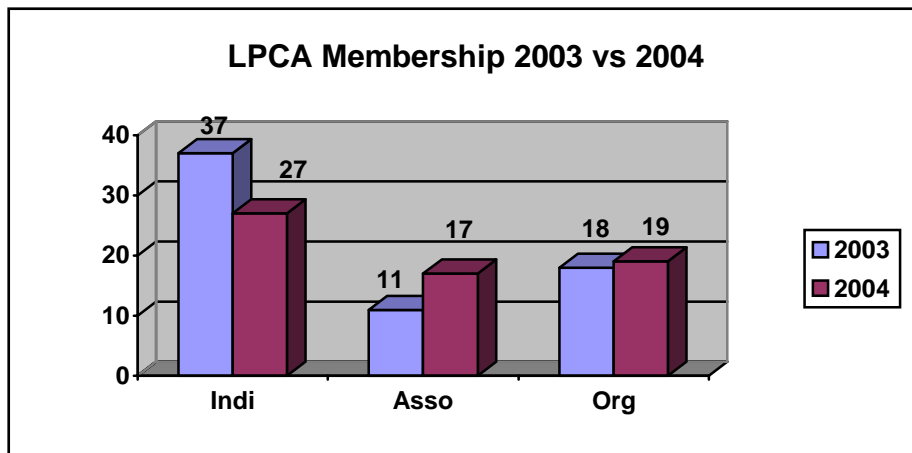
LPCA Members 2003 - 2004

Organizational Members: Capitol City Family Health Center, David Raines Community Health Center, East Jefferson Community Health Center, Eastside Community Health Center, EXCELth Inc., Healthcare for the Homeless, Iberia Comprehensive Community Health Center, Innis Community Health Center, Outpatient Medical Center Inc., Primary Health Services Center, Southwest LA Center for Health Services, Southwest LA Primary Healthcare Inc., St. Bernard Health Center, St. Helena Community Health Center, St. Charles Community Health Center, Teche Action Clinic, Inc., The Medical Center, Baton Rouge Primary Care Collaborative, Rapides Primary Health Care Center

Associate Members: Bureau of Primary Care and Rural Health, Bayou Teche Community Health Network, Central Louisiana AHEC, Daughters of Charity Health Service, KidKare Multipractice Clinic, LaPorte, Sehrt, Romig & Hand, Louisiana Health Care Review, Inc., North Louisiana AHEC, Dolby Providers, Inc., LSU/HSC Health Care Services, Jefferson Community Health Center, Bunkie General Hospital, North Louisiana AHEC, Community Health Systems of LA., CASSE Central Health System, Jefferson Parish Human Services

Individual Members: Dodie LaMott, Rhonda Litt, Dr. Forest Smith, Valerie J. Jones, Larry Ayers, Donna Newchurch, Joseph Kimbrell, Ernestine B. Epperson, Rose V. Forrest, Barbara M. Hawkins, Gail Hollins, Roderick Campbell, Brenda Goode, Jeannine Hinton, Emma Tarver, Gerrelida Davis, Laura Hoots, Sandra Lode, Linda Beauvais, Catrina Ratcliff, Michelle Donaldson, L.C. Brown, Randolph Fisher, Rose Turner, J.W. Scarborough, Rachel C. Smith and Randy C. Smith Jr.

“The LPCA staff sends a special thanks to all of our faithful Members that help us to promote 100% access to healthcare for all Louisianians”



Louisiana Primary Care Association 2004 Annual Report
LPCA Financial Summary March 2003 - March 2004

CHANGES IN UNRESTRICTED NET ASSETS

REVENUES

Federal support	\$ 341,788
Member Dues	57,650
Conferences	50,045
Interest	2,621
Loss on disposal of assets	(4,300)
Other income	<u>13,570</u>
Total unrestricted revenues, gains, and other support	<u>461,374</u>
Net Assets Released From Restrictions	
Satisfaction of program restrictions	1,801
Total unrestricted revenues, gains, and other support	463,175

EXPENSES

Management and General	135,208
Supporting Services	<u>310,558</u>
Total Expenses	<u>445,766</u>
Increase in unrestricted net assets	17,409

CHANGES IN TEMPORARILY RESTRICTED ASSETS

Increase in net assets	15,608
Net assets – beginning of the year	365,779
Net assets – end of year	381,387

